

Raising
Health



Spring 2026
Newsletter



Raising Health

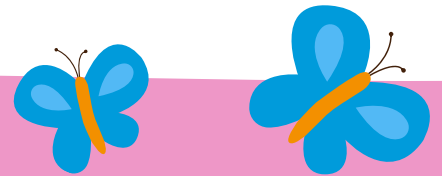
Charity Number: 1057361





Welcome back

As we publish this fifth issue, we're delighted to mark a special milestone: a full year of sharing our charity's news, stories, and successes with you. What began as a small idea, has grown into a meaningful way to stay connected with everyone who supports the work we do for Leicestershire Partnership NHS Trust.



In this issue, we're shining a light on some of the standout moments from the last quarter. You'll find updates on recently completed projects, including new digital resources and initiatives designed to support the wellbeing of our dedicated NHS colleagues. We're also pleased to highlight the vital role of our trusts and foundations as we share this year's T&F report, and of course to celebrate our brilliant fundraisers who continue to amaze going above and beyond raising money.

You'll also catch up on the events our dynamic duo, Adele and Magda, have been out and about attending.

And with spring on the way, we're inviting community groups and corporate teams to help us refresh some of our outdoor spaces so patients can enjoy them throughout the warmer months.

Thank you for being part of our journey. Happy reading and here's to another year of making a difference together.



Quarterly Highlights - February 2026

Engagement:



Three press releases

generating five
media covers



86

trusts and
foundations
contacted



Two publications

forth newsletter
and
T&F Report

Fundraising:



£416k

Charitable funds income*

*Dec 2025-Jan 2026



£2,000

raised by 4 half
marathon runners



£271k

legacy donation received
for Rutland Memorial
Hospital

Driving change through funding:



31

New projects funded
through charitable funds



£20k

worth support provided to
all inpatients wards over
Christmas to celebrate
the season



60

people attended
Christmas event for
families in temporary
accommodation which
we co-organised

Impact story:

Digital Bookcase

We are proud to support bringing the Digital Bookcase to life across LPT. It is a powerful collection of award-winning mental health guides created by NHS clinical psychologists. These easy-to-read booklets have been used by LPT clinicians in one-to-one sessions, helping people understand their mental health, reflect on their progress, and share resources with loved ones.

With the investment of nearly £10,000 from charitable funding, we're now enabling the next step: an LPT-branded Digital Bookcase that is accessible not only in clinical settings but across our wider communities.

This investment covers the licence, hosting, and maintenance costs, allowing us to expand the bookcase into While You Wait pages, Recovery College resources, GP education, and more than 100 community and VCS partners.

By improving access to trusted, inclusive mental health information, people get support earlier, build confidence, and stay well. A simple idea with a big community impact.

For the resource access please follow the link:
<https://www.leicspart.nhs.uk/mental-health/>



Impact story:

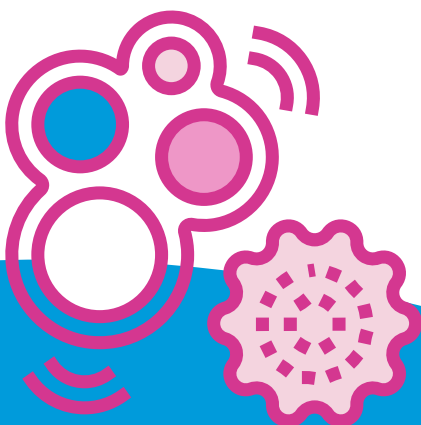
Beacon Sensory Room

We were delighted to welcome some of our incredible funders to the Beacon Unit to see the completed sensory room they helped bring to life!


With their support we were able to develop this transformative space at our Children and Adolescent Mental Health Unit.

The sensory room is equipped with calming features such as a hurricane wall, infinity tunnel, projector, and more. Patients have loved using this sanctuary for moments of calm and reflection.

Thank you so much to everyone who donated!



Thank you to all the funders of this project

-  Amazon
-  Anand and Sethi Trust
-  Bradgate Rotary Club
-  Fleckney Parish Council
-  Florence Turner Trust
-  Maud Elkington Trust
-  Pukka



Impact story:

Staff Wellbeing Team Time Out

Through profits from our Staff Lottery, we were proud to fund the Team Time Out initiative, delivered by Health and Wellbeing team. This programme gives staff protected time to step away together, reconnect, and recharge, strengthening team culture, boosting morale, and supporting overall wellbeing.

Teams across the Trust have enjoyed dedicated time for shared lunches, wellbeing walks, craft sessions and other activities to improve team working for better patient care. The feedback has been overwhelmingly positive, with staff telling us how much they value both the time and the charity's support in making these moments possible, with **98% of teams** reporting an improvement in their wellbeing.

Over £35,000 has been invested, supporting **nearly 9,000 staff members and volunteers**, with more than **200 sessions**.



Partnership spotlight: Tilbury Douglas support Awards

We are delighted to share that Tilbury Douglas has confirmed they will once again be the headline sponsors for both of our staff recognition events this year: the Celebrating Excellence Awards and the Long Service Awards.

This is fantastic news for our charity and reflects the strong, valued relationship we have built with Tilbury Douglas over the years. Their continued support plays a vital role in helping us celebrate our wonderful staff and the exceptional work they do every day.

Put your brand centre-stage at one of the Trust's biggest celebrations. Sponsoring our awards is a brilliant way to showcase your support for NHS staff, boost your visibility, and align your business with our feel-good events that truly make an impact. If you'd like to unlock the benefits of becoming a sponsor, we'd love to hear from you!



For our Sponsorship opportunities please contact lpt.raisinghealth@nhs.net

Partnership spotlight: Trusts and Foundations Report

Our newly published Trusts and Foundations Report showcases the incredible partnerships we've built with local and national charitable funders over the last 12 months, supporting a wide range of projects that directly benefit our patients.

The report has been extremely well received and has become a powerful tool for the charity to celebrate the collaborations we have built and invite the new ones.



As part of the campaign, we shared the report with 120 funders, including previous partners, eligible funders, and invitation-only trusts, and the response has been outstanding. We have received excellent feedback and have been invited to apply for new funding opportunities as a direct result, which is an important step forward for our fundraising efforts.



**Find our
report
here**



**“I loved the Trusts and
Foundations report. It is
wonderful to see the meaningful
difference Raising Health is
making in mental health,
learning disability, and
community health services, and
we are pleased to play a small
part in that work!”**

Hospital Saturday Fund

Fundraising spotlight: Family raises funds for Community Integrated Neurology and Stroke Service (CINSS)

We are incredibly grateful to the family of one of our patients, for raising £1,000 in recognition of the care they received.

One of our patients, Steve Taylor, suffered a traumatic head injury during a night out three years ago. After spending a month in hospital, he chose to continue his rehabilitation at home rather than in a specialist unit, delivered by our CINSS.

To show gratitude, Steve's wife Lana and daughter Kaytlin completed the Windsor Half Marathon, raising an amazing amount for the service!

THANK YOU
* FOR YOUR *
KINDNESS



Scan the QR code to hear Steve's and Lana's story

Fundraising spotlight: Our very own Adele and Alex!

A huge applause to Adele and Alex from our Fundraising and Communications teams, who took on the Leicestershire Half-Marathon in February and raised an amazing £1,020!

Thank you to every single person who donated to their fundraiser! Your generosity will make a meaningful difference to the patients we support.



Volunteering spotlight: Opportunities to get involved

Looking for a brilliant team-building opportunity that also makes a real difference locally?

Our group volunteering days are the perfect way for community groups and businesses to get hands-on, give back, and enjoy time together outdoors.

This spring, we're inviting teams to help us refresh and brighten our outdoor spaces so patients can enjoy them throughout the warmer months. It's a rewarding, feel-good activity that brings people together while supporting wellbeing across our Trust.

If your group or workplace would like to get involved, we'd love to welcome you.



New funding update: Sounds Inclusive Project

We are pleased to share that we have recently received funding for our Sounds Inclusive project, providing music therapy sessions to our mental health patients.

This support will enable us to continue to deliver live music sessions to mental wards with a wide range of musicians including guitarists, singers and violinists. We know just how big an impact these sessions are having in improving patient wellbeing, reducing anxiety and lifting mood.

We are so grateful to the Duncan and Toplis Foundation for making this happen!



See our webpage for current appeals:

<https://www.raisinghealth.org.uk/appeals/appeals>

Raising Health on the go

Driving change nationally with NHS Charities Together

As one of just **six projects selected from 51 applications** for the **NHS Charities Together Innovation Challenge**, we were proud to join fellow grantees at the Development Day in Birmingham. The session brought together all granted initiatives supporting CAMHS waiting list projects and it was great to share our ambitions together.

A highlight came from NHS England, who outlined how projects like ours will directly shape national approaches to tackling health inequalities. It was a powerful reminder that our work is contributing to real, systemic change nationally across the NHS.



LOUD & PROUD

Raising Health on the go Teddies for Loving Care 25th Anniversary Celebration

We were so honoured to be invited to the Teddies for Loving Care (TLC) programme's 25th anniversary celebration, together with one of our valued partners, the Leicestershire and Rutland Masonic Foundation.

The event gave us the opportunity to learn more about the incredible community work delivered by the charity and to hear inspiring guest speakers share the profound impact that TLC has had across hospital settings throughout Leicestershire and Rutland.

We are deeply grateful to TLC for their generous donation of these special bears to our children's services. They continue to bring comfort, reassurance and hope to our young patients at the times when they need it most.



How you can help



Are you interested in supporting us today? Your kindness and generosity enables us to offer local patients the best services and care. We would be very grateful for any contribution to add to our existing fundraising targets. If you require any further information, please do not hesitate to get in touch.



Financial contributions towards general work of the charity or specific appeals



Sponsorship opportunities



Organising your own fundraising activities



Awareness raising and volunteering



Gifts in Kind

If you kindly wish to donate please visit our webpage:
www.raisinghealth.org.uk/donate/donate



Raising Health

www.raisinghealth.org

Leicestershire Partnership NHS Trust, Raising Health,
Room 100/110 Pen Lloyd Building, County Hall, Glenfield, Leicester LE3 8RA

Raising Health is a registered charity within England and Wales.
Charity No. 1057361

LPT.RaisingHealth@nhs.net
0116 295 0889

