

# Summer 2025 Newsletter

Raising  
Health 



**Raising Health**  
Charity Number: **1057361**



# Welcome back

Welcome to the second edition of our Raising Health newsletter!

We were so thrilled by the response to our very first issue. Thank you for taking the time to read, share, and support our journey.

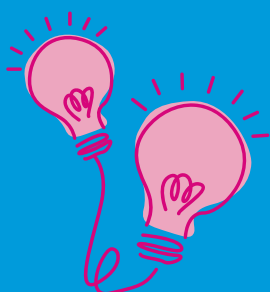
At Raising Health, our purpose is simple yet powerful: we generate income to support excellent care initiatives, equipment, and innovations that go above and beyond core NHS provision, enhancing the experience of existing and future patients, service users, and staff at Leicestershire Partnership NHS Trust.

This edition arrives at an exciting time, as we proudly align with the Trust's new strategy: THRIVE. We work hand-in-hand with our LPT colleagues to build healthier and more compassionate communities.

Inside, you'll find more stories of impact, progress, and hope — made possible by people like you. Whether you're a donor, volunteer, fundraiser or supporter, your contribution means the world to us. We hope this issue leaves you feeling inspired and connected to the vital work you're helping to achieve.

With our appreciation,

Your Raising Health team



In our last edition, we invited you to help us name the newsletter. We were chuffed to receive many creative suggestions! After much thought, we've decided to stick with "just" Raising Health, inspired by one reader's lovely feedback that it's already a strong, engaging name.

A special thank you for sharing that insight. Our Fundraising Manager will be in touch with a little surprise prize!

## Quarterly **Highlights** - June 2025

### Engagement:

20



Number of internal  
and external  
events attended

1st



Our very first quarterly  
eNewsletter was  
published in April

1,700



Record visits to our  
website and high social  
media engagement

### Fundraising:

£105k



Charitable funds  
income\*  
\*March-May 2025

15



People completed  
Wolf Run raising  
funds for us

£14k



Secured in sponsorship to  
support the Long Service &  
CE Awards

### Driving change through funding:

£25k



Completion of the  
therapeutic garden at  
Bradgate MH Unit

£3,266



Thanks to funds raised we will  
be able to run cookery  
workshops at the Beacon Unit

£13k



16 pull out sofa beds  
purchased for our  
Community Hospitals  
for the comfort of  
the loved ones of our  
in-patients

# Impact story:

## Flow Neuroscience Headsets

Over the past eight months, building on the success of our pilot project testing Flow Neuroscience Headsets as a treatment for depression, we have secured **£40,000** to provide this **innovative therapy** to patients receiving care from our Crisis and Eating Disorder services.

None of this would have been possible without the support of our generous funders. These funding has opened doors for some of our most vulnerable patients to receive life-changing, and, in many cases, life-saving, care that simply would not have been accessible otherwise. We would like to thank:

- E H Smith Charitable Trust
- Westfield Health
- Morrison's Foundation
- Hobson Charity
- Forterra Community Fund
- Hospital Saturday Fund
- Duncan and Toplis Foundation
- Blaby District Council
- Carlton Hayes Charity





Leicestershire Partnership NHS Trust

# Raising Health

Leicestershire and Rutland's  
Community and Mental Health Charity

Our charity supports community health, mental health and learning disability services. You could help us support patient experience and staff wellbeing by making a donation.

To donate, text: RAISING  
HEALTH to 70085

[www.raisinghealth.org.uk](http://www.raisinghealth.org.uk)

Tel: 0116 295 0889

@Raising\_Health



"I've been on antidepressants for years, but I was still trying to end my life. Since I've been on Flow, I am positive now. You wouldn't recognise me from 12 months ago—it has changed my life."



# Impact story:

## Stewart House Gym



We are so excited to share that the new gym at Stewart House, our mental health rehab unit, opened for patients on May 22nd!

This fully equipped space helps boost patient wellbeing through exercise. It is an important part of patients' recovery journey.

A big thank you to the families, staff, and community groups whose donations towards "Road to recovery" appeal made it all happen!

Sarah Holliehead keeps her fundraising active in memory of her brother Greg. To read her story please visit her JustGiving page: <https://www.justgiving.com/page/sarah-holliehead-2>

# Partnership spotlight: Long Service Awards



We were so proud to support the Leicestershire Partnership NHS Trust Long Service Awards 2025, honouring 752 incredible colleagues who have given between 10 and 40+ years of dedicated service to the NHS; totaling an amazing 12,885 years of care to our communities.

This year we extended the celebration to include 10, 15, and 20-year milestones, alongside the long-standing 25, 30 and 40 years of service. That's a huge step forward in recognising the dedication of even more of our valued staff and volunteers.





None of this would have been possible without the support of our incredible sponsors. Thank you to:

### Headline Sponsor

Tilbury Douglas

### Category Sponsors

10 Years – Capsticks LLP

20 Years – Santé Group

25+ Years – Browne Jacobson

### Gift-in-Kind Sponsors

Central Print (Leicestershire Trade Services) – print sponsor

NSPCC National Training Centre – part venue sponsor

We still have some sponsorship packages available for the Celebrating Excellence event in September so please get in touch to see how your company can access the benefits.





# Fundraising spotlight: Wolf Run 2025

Fundraising efforts kicked off this summer with 15 members of staff from the Bradgate Mental Health Unit taking part in the Wolf Run on Saturday 7th June.

All money raised will go towards funding physical activities for patients at the Bradgate Mental Health Unit to help them whilst on their road to recovery.



# Volunteering spotlight: Leicester College Filming

In May, we had the pleasure of welcoming a group of wonderful media students from Leicester College who filmed members of our staff and created a beautiful corporate video.

They visited both County Hall to film members of Raising Health team and also the Bradgate Mental Health Unit to showcase our new therapy garden that has recently been finished and is being used by patients.





# Raising Health on the go

## Scholar Schools System:

We were invited to join students and fellow organisations (Samaritans, Mind, Lamp Charity, P3 Charity (People Potential Possibilities)) at the Leicester campus of Scholars School System as part of their Mental Health Awareness Week workshops in May.



## Amazon:

We also attended the Global Volunteering initiative at Amazon Hinckley in May, running a presentation for day and night shift.



# Raising Health on the go

## NHS Charities Together Conference:

Raising Health is an active member of NHS Charities Together organisation. In May we attended their insightful event focused on making an impact. It was great to link with other NHS charities, network and learn from each other to serve our Trust even better.

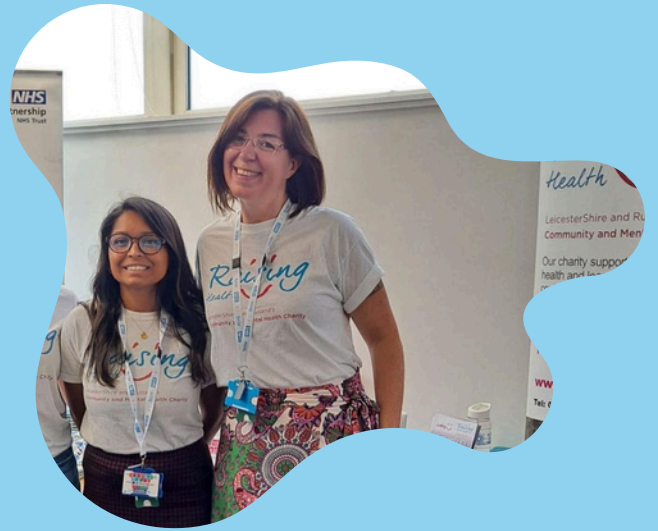
## Chartered Institute of Fundraising Convention:

On 9th June our fundraising manager Magdalena Korytkowska alongside Deidre Brown from Mental Health UK and George Knight from Directory of Social Change was a panellist during the wellbeing track. We were proud to make our mark on the national level.





# How you can help



Are you interested in supporting us today? Your kindness and generosity enables us to offer local patients the **best services and care**. We would be very grateful for **any contribution** to add to our existing fundraising targets. If you require any further information, please do not hesitate to get in touch.

- Financial contributions towards general work of the charity or specific appeals
- Sponsorship opportunities
- Organising your own fundraising activities
- Awareness raising and volunteering
- Gifts in Kind

If you kindly wish to donate please visit our webpage:  
[www.raisinghealth.org.uk/donate/donate](http://www.raisinghealth.org.uk/donate/donate)





[www.raisinghealth.org](http://www.raisinghealth.org)

Leicestershire Partnership NHS Trust, Raising Health,  
Room 100/110 Pen Lloyd Building, County Hall, Glenfield, Leicester LE3 8RA

Raising Health is a registered charity within England and Wales.  
Charity No. 1057361

LPT.RaisingHealth@nhs.net  
0116 295 0889

