

Spring 2025 Newsletter



**Spreading joy
& comfort to
patients across
our trust**

Raising Health

Registered Charity Number: 1057361

Welcome

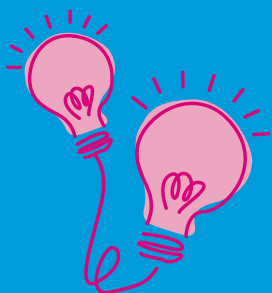
Welcome to the very first edition of our charity newsletter — a space we've created to keep you connected with what we do, and more importantly, the impact you make possible.

Through these pages, we'll be sharing stories of hope, dedication, and community spirit. You'll get a behind-the-scenes look at the projects your generosity supports, the lives being changed, and the extraordinary work happening every day — work that simply wouldn't be possible without the kindness of people like you.

Our mission is clear: to raise vital funds that go beyond core NHS provision — supporting initiatives that enable Leicestershire Partnership NHS Trust to enhance the community and mental health care they provide. Whether it's funding advanced medical equipment, enhancing wellbeing spaces, or supporting vital research, your continued support helps us go the extra mile where it's needed most.

Thank you for being part of this journey with us. We hope this newsletter leaves you feeling proud, inspired, and as passionate about our mission as we are.

With heartfelt thanks,
your Raising Health team



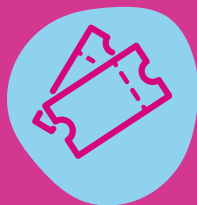
Will you help us to find the best title for our new publication? Please send ideas to lpt.raisinghealth@nhs.net. Our Fundraising Manager, Magda, will provide a surprise prize for our preferable title idea!

**Raising Health generates income to
support excellent care initiatives,
equipment and innovations which go
above and beyond core NHS provision
to enhance the experience of existing
and future patients, service users and
staff at Leicestershire Partnership
NHS Trust**

Quarterly **Highlights** - March 2025

Engagement:

1,757



tickets for March
lottery superdraw

266



contacts received our
first ever Impact
Report

7



media coverage from
four press releases

Fundraising:

£80k



charitable funds
income*

*Dec 2024-Feb 2025

£21k



raised for the Crisis
team to support Flow
Neuroscience headsets

£19k



worth monetary donations
and gifts-in-kind for our
Christmas appeal

Driving change through funding:

57



new funded projects*
worth £89k

*Dec 2024 - Feb 2025

600

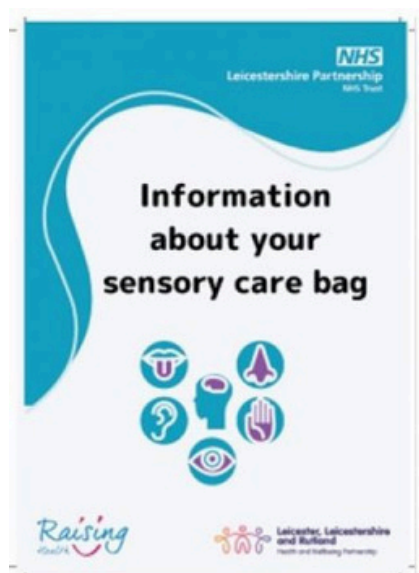


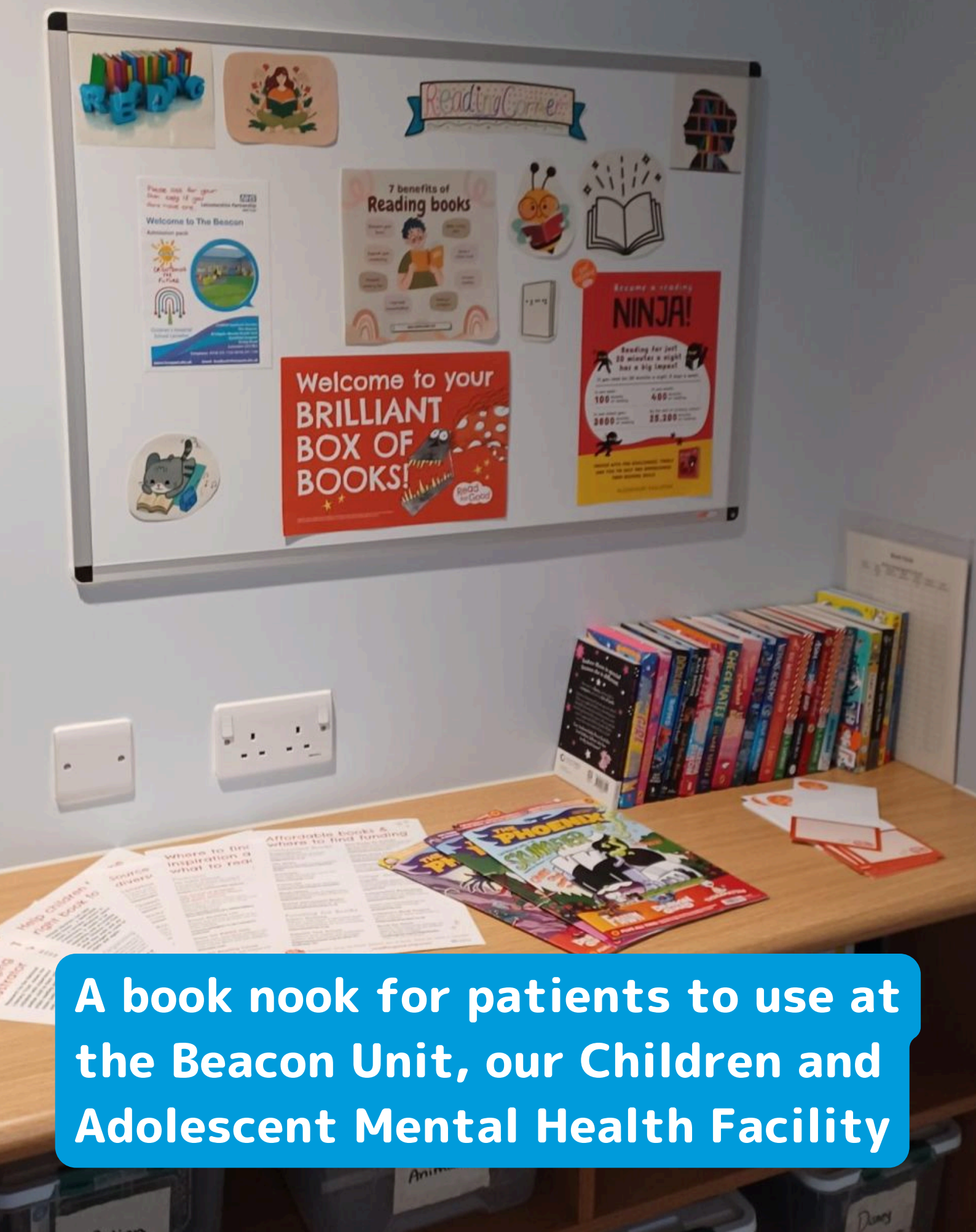
Christmas presents
delivered to our
inpatients

Care Bags for patients with learning disability or Autism

This quarter we launched the new project to further support autistic people and people with a learning disability - sensory bags.

The initiative has been designed to offer comfort and reduce stress for autistic people and people with a learning disability when they are accessing LPT's services across Leicester, Leicestershire and Rutland (LLR). These communities often have sensory needs and find louder healthcare environments overwhelming causing them heightened anxiety and stress. To tackle this, the charity provided **500 sensory bags** for our patients to use and we are proud to say they have been an astonishing success.





A book nook for patients to use at the Beacon Unit, our Children and Adolescent Mental Health Facility

Let's Get Gardening Project

We are so pleased to share that the work on the sensory garden at the Bradgate Mental Health Unit is now complete.

We launched the Let's Get Gardening appeal to raise £25,000 to have a therapeutic garden space created to help adults with severe mental health conditions as part of their treatment at the Bradgate Unit.

We reached our target and the garden is now open for our patients to use whilst on their journey to recovery.

Thank you to all our amazing donors: Himat Tanna Charitable Fund; Asda Foundation; Barkby Seekers; Starbucks, Next Charitable Giving, Leicestershire and Rutland Masonic Association, OneStop Community Fund, Clockwise Credit Union, Maud Elkington Trust, Leicestershire Trading Centre and members of the public.

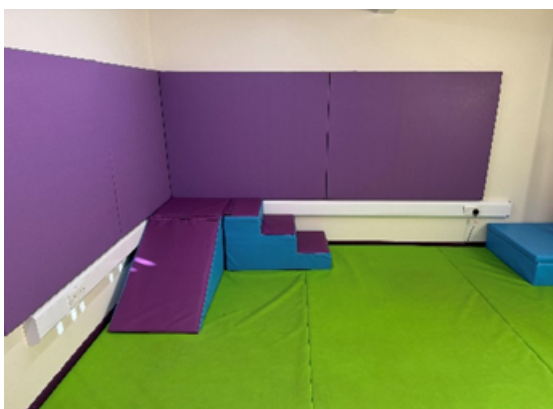




Children's Therapy Spaces

We are excited to share that we supported two beautiful therapy spaces to aid therapy through play for our young patients.

Our Children's Therapy Services will use these spaces to help patients with developmental issues and sensory impairments improve their gross motor skills, communication skills and relaxation techniques. We received funding from the ASDA foundation and Amazon enabling us to purchase and install padding and soft play equipment.



To make a donation towards this appeal, visit our website and donate here: <https://www.raisinghealth.org.uk/appeals/sensory-spaces-appeal>



Donated by the Build-A-Bear Foundation, we gave out 400 bears to our young patients with life limiting conditions receiving care from our Diana Community Nursing Service.

Flow Neuroscience Headsets

Following a successful pilot project that the Leicestershire Partnership NHS Trust led on, using Flow Neuroscience headsets as an innovative alternative treatment to depression, our charity reached out to funders to ensure the sustainability of this project.

We have already secured nearly £30,000 to purchase **100+ headsets** for the crisis mental health service to treat patients with depression and further research the impact on suicide rates.



Thank you to our donors:
E H Smith Charitable Trust
Westfield Health
Morrison's Foundation
Hobson Charity
Forterra Community Fund
Hospital Saturday Fund
Duncan and Toplis Foundation
Blaby District Council



"I have had medication for years, but was still trying to end my life. Since I have been using the Flow, it has really helped me. I am positive now, whereas before, I wasn't."

Mind-Fit Workforce Event

In January, we held our second Mind-Fit Workforce networking event, helping to support local businesses maintain a healthy workforce.

This included a session on Seasonal Affective Disorder (SAD) from LPT's Cognitive Behavioural Psychotherapist's who provided information on CBT based interventions.



We will be holding quarterly networking events with local businesses based around supporting the mental health of staff.

Full details can be found on our website and social media so stay tuned!

Raising Health on the go



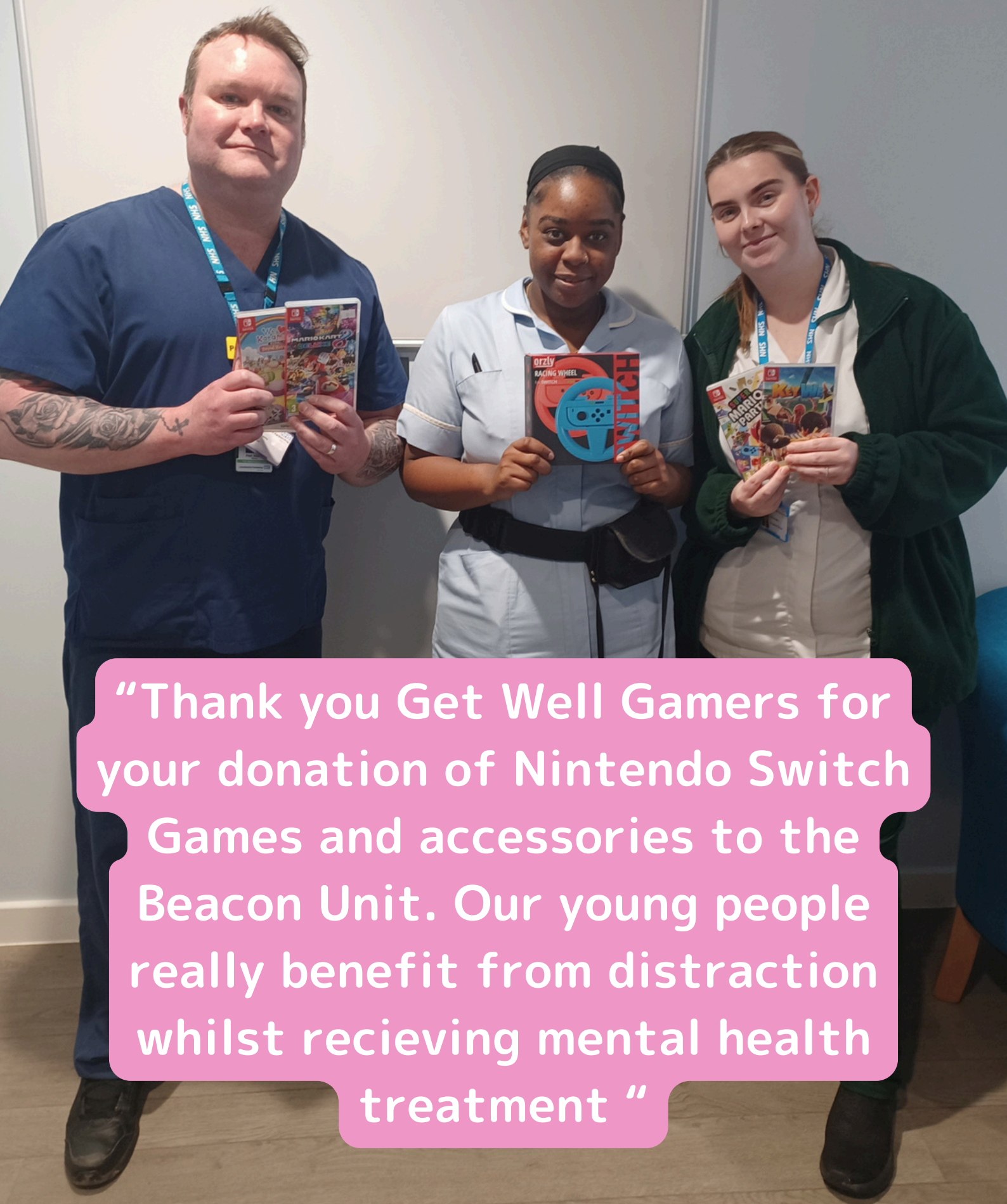
Raising Health Roadshows

As part of our commitment to raising awareness about funds available and providing staff support, throughout the year we host with the Health and Wellbeing team the 'Roadshows' at LPT's sites.

In the Community

We also have been visiting community groups like the Melton Belvoir Rotary Club to share our success stories and collaboration opportunities. If you are a community group looking to work with a local charity, contact us today!





“Thank you Get Well Gamers for your donation of Nintendo Switch Games and accessories to the Beacon Unit. Our young people really benefit from distraction whilst receiving mental health treatment ”

Launch of Impact Report

In January, we launched the charity's first ever Impact Report showcasing our amazing achievements and impact on patients and staff.

We also held an event with prospective and current funders to present the impact of our work and share updates on present projects.



The full report can be found on our website at <https://www.raisinghealth.org.uk/how-we-help/how-we-help>



How you can help



Are you interested in supporting us today? Your kindness and generosity enables us to offer local patients the **best services and care**. We would be very grateful for **any contribution** to add to our existing fundraising targets. If you require any further information, please do not hesitate to get in touch.

- Financial contributions towards general work of the charity or specific appeals
- Sponsorship opportunities
- Organising your own fundraising activities
- Awareness raising and volunteering
- Gifts in Kind

If you kindly wish to donate please visit our webpage:
www.raisinghealth.org.uk/donate/donate





Thank you to our supporters

- 
- Build-A-Bear Foundation
- 
- Starlight Foundation
- 
- Get Well Gamers
- 
- Reading for Good
- 
- Next Giving PLC
- 
- Schreier Foundation
- 
- ASDA Foundation
- 
- Amazon Hinckley
- 
- Co-op Community Fund
- 
- Anand and Sethi Trust
- 
- E H Smith Charitable Trust
- 
- Westfield Health Trust
- 
- Morrisons Foundation
- 
- Carlton Hayes Mental Health Charity
- 
- Forterra Fund
- 
- Hobson Trust
- 
- Hospital Fund
- 
- Duncan & Toplis
- 
- Masonic Foundation
- 
- Flow Neuroscience
- 

Carlton Hayes Highlights

October 2024 - March 2025



£27,956

Awarded to services



£55,372

Total applications

Breakdown of funds



£15,921

Spent on Adult Mental
Health Services



£2,500

Spent on Mental Health
Services for Older People



£9,535

Spent on Learning Disability
Children and Adolescent

Key figures



2679

Patients supported



22

Projects funded



www.raisinghealth.org

Leicestershire Partnership NHS Trust, Raising Health,
Room 100/110 Pen Lloyd Building, County Hall, Glenfield, Leicester LE3 8RA

Raising Health is a registered charity within England and Wales.
Charity No. 1057361

LPT.RaisingHealth@nhs.net
0116 295 0889

