

Group Volunteering Experiences

Thank you for considering supporting Leicestershire Partnership NHS Trust (LPT) through the gift of your time and skills.

As the Trust's registered charity we are excited to work alongside you and your team. We look forward to explore the opportunities with you!

Current available projects:

Gardening

Number of sites require their gardens to be spruced up, that may include:

- sanding and varnishing benches and other garden furniture
- jet washing pavements
- weeding
- planting
- general tidy up



Sites available

- Evington Centre
- Gwendolen House
- Westcotes House
- Stewart House
- St Lukes Hospital, Market Harborough → **opportunity booked**
- Coalville Hospital
- Loughborough Hospital → **opportunity booked**
- Herschel Prins Centre (entrance)



Current available projects:

Refreshing Summer House

The Summer House, donated by Rotary Group in Coalville, requires maintenance to allow patients use it again. That includes:

- sanding outside walls
- varnishing/painting outside walls
- weeding
- cutting down bushes
- general tidy up around the area

Sites available

- Coalville Hospital



Current available projects:

Improving Children's Services spaces

Our Loughborough site for Children's Services require support with transforming a treatment room, corridor and a waiting room into children friendly environment.

That includes:

- wall painting
- sticking decals to the walls
- creative painting/small murals

Sites available

- Loughborough Hospital



Current available projects:

Christmas gifts wrapping for patients → opportunity booked

Each year we provide 600 gifts to all our inpatients staying under our care over Christmas. All presents need to be wrapped and ready for distribution.

That includes:

- wrapping gifts
- boxing wrapped presents ready for their final destination
- moving and handling boxes

Sites available

- County Hall - LPT's headquarter
- Distribution across 30+ sites



Your involvement:

Your contribution

As part of your involvement we would very much appreciate:

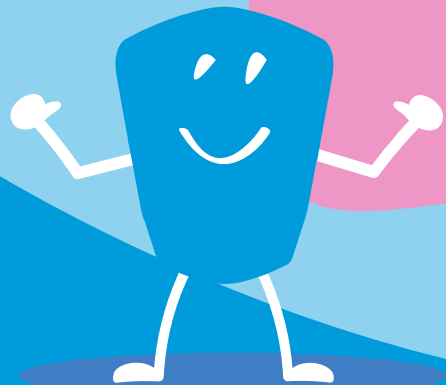
- your contribution towards tools and materials needed to complete the task
- taking responsibility of equipping your team in all PPE needed e.g. gloves, clothes covers etc
- utilising your team equipment (excluding electrical) or contribution towards purchasing needed equipment
- Lunch to be organised by your team, if you wish

Our offer

- Comprehensive risk assessment completed together with your lead
- Project lead support throughout the day
- Hot and cold beverages and cakes

It would bring us great pleasure if you and your team decides to make a difference together with us!
To book and organise your volunteering experience please contact us on:
lpt.raisinghealth@nhs.net

We look forward to working alongside you!



Raising Health

www.raisinghealth.org

Leicestershire Partnership NHS Trust, Raising Health,
Room 100/110 Pen Lloyd Building, County Hall, Glenfield, Leicester LE3 8RA

Raising Health is a registered charity within England and Wales.
Charity No. 1057361

LPT.RaisingHealth@nhs.net

0116 295 0889

